

Cedar Creek

HATHAWAY EDITION

FIFTH WHEELS

Cedar Creek
HATHAWAY EDITION



THE SMART CHOICE FOR THE EXPERIENCED RV'ER



36CKTS

HATHAWAY EDITION PACKAGE:

- ◆ 48" LED TV in Living Room
- ◆ Jensen Slimline AM/FM/ DVD/CD/ USB blue tooth stereo system with powered subwoofer, (4) interior speakers, and (2) exterior speakers
- ◆ Golden Glazed European Beech cabinetry
- ◆ Sculpted solid hardwood slideroom fascia in living room
- ◆ Larger fireplace with solid wood surround
- ◆ Newly designed window valances
- ◆ New LED lighting fixtures
- ◆ Day shade and blackout roller shades
- ◆ La-Z-Boy® Sofa and recliner set with lifetime warranty on parts
- ◆ New wallboard
- ◆ Solid surface LG® countertops with full twin stainless steel under-mounted sinks
- ◆ Recessed stove top with glass cover and solid surface handle
- ◆ Congoleum® Diamondflor
- ◆ New full panel backsplash
- ◆ Island overhead with pendant lights, island surround and LED night lighting
- ◆ Self-closing full extension drawer guides
- ◆ Large medicine cabinet with side shelves in bathroom
- ◆ Newly designed shower
- ◆ "True" pearl gelcoat exterior – truly the best of the best in gelcoat exteriors. Stronger, thicker and keeps it's high gloss longer than our competitors less expensive gel "coated" exteriors
- ◆ Quad level entry step
- ◆ Black metal wrapped electric awning with LED night lighting strip
- ◆ Friction hinge entry door with "soft top" storm door



DOMINO DECOR

Cedar Creek's residential design creates a feeling of home away from home. Name brand products including Congoleum®, Shaw®, Whirlpool®, La-Z-Boy® and LG® offer high quality products for comfort and peace of mind while on the road.

Cedar Creek

HATHAWAY EDITION



34RE



This amazing 12 volt Jensen Home Theater System includes full integration with smart devices including Apple's iPhone, iPod, iPad, plus Bluetooth streaming audio, video, MP3 and weather band information. A digital handshake between the 48" Jensen television and stereo, makes this system the RV industry's first, easy to use, stereo with all-digital connectivity. Control the stereo and interior/exterior speakers with your phone, or the remote from inside or outside the coach.



Cedar Creek
HATHAWAY EDITION



38FB2

Cedar Creek's bathrooms all feature a 48" residential, one-piece fiberglass rectangular shower with sliding glass doors, a large seat and an upgraded shower head. An 18" circular flow porcelain toilet and linen cabinet complete this spacious bathroom. This walk-in closet makes the most of every inch, with a place for everything. Each closet is washer/dryer prepped, features 92" of hanging space, a three drawer storage box, and plenty of shelving.



This 38FB2 front bathroom floorplan provides a choice of a half bath or walk-in pantry, (pictured here), near the living area. Add an optional stack washer and dryer, (located in the front closet), and you have the perfect coach for full time travel.



Cedar Creek
HATHAWAY EDITION

RELAX IN RESIDENTIAL STYLE AND LUXURY

Relax a little longer in our private bedroom retreat. Each Serta® Winding Road Mattress is a 60" x 80" queen (King optional) or upgrade to the Bellagio mattress (Queen or king) with a gel memory foam top, which gives you the luxury sleep of a five star hotel.



Cedar Creek

HATHAWAY EDITION

Radius ceilings create a dramatic effect, adding beauty and elegance to Cedar Creek's front living room fifth wheels.

Anything but basic - Cedar Creek's modern luxury kitchens are a central living space to prepare meals, enjoy dinner and relax comfortably with family and friends.

KITCHEN FEATURES:

- ◆ Stainless steel 30" microwave with built in vent
- ◆ Recessed large stainless steel oven with Piezo igniter, sealed burners and glass cover with solid surface handle
- ◆ Optional 20 cu. ft. stainless steel french door refrigerator with freezer drawer and ice maker
- ◆ Self-closing kitchen drawer guides plus a double waste basket cabinet
- ◆ Solid surface LG® countertops with full twin stainless steel under-mounted sinks



38FL6

HARVEST DECOR





38CK

Sit back, relax and enjoy this entertainment center in peaceful comfort with the roof mounted Whisper Quiet High Performance air conditioner with cold air returns. Shown with Paradise decor and Lux Beige La-Z-Boy® 80" sofa and optional theater seating.

DECOR

AUTUMN

HARVEST

PARADISE

DOMINO



L A Z B O Y RECLINERS AND THEATRE SEATING

Live life comfortably with our standard La-Z-Boy® sofa sets. Choose Beige or Mahogany recliners, or theater seating for residential comfort that lasts a lifetime.



Dirt Devil® CV950 central vacuum cleaning system with VacPan™ automatic dustpan at entry door.

38CK Hall closet with optional front loading Splendide washer and dryer.



MAHOGANY



BEIGE



A water saving, stainless steel drawer dishwasher is optional on select models. (36CKTS, 38CK, 38FB2 only)



Our freestanding table comes standard with a large leaf extension and four chairs, (two with hidden storage and two fold-away).



Cedar Creek's luxurious bathroom includes a spacious 48" one-piece fiberglass residential shower with a large seat and triple sliding glass doors, an 18" tall porcelain toilet with circular flush and a Fantastic Fan.



Wireless Remote Control – A Forest River exclusive that has controls for the electric awning, slide rooms, all jacks including the optional "level-up", and security entrance lighting.



Aluminum skirting is wrapped all the way to the frame for a clean, crisp looking exterior.



Automotive frameless windows give this coach's exterior an elegance only seen in high dollar fifth wheels.



Removable "Soft Top" Vinyl Storm Doors allow light and visibility without losing cooling or heating.



Cedar Creek's original design "Z-frame" chassis. This frame gives our customers over 100 cu. ft. of storage space, turning their front storage compartment into a front storage shed.



All fifth wheels are now prewired for easy wireless observation camera installation at the dealership for safe, convenient rear viewing when backing up and on the road.



Suburban

All Cedar Creeks are now equipped with a Suburban two-stage, on demand, water heater with 5 burners. It uses 50% less propane than a standard RV water heater and has freeze protection.



A&E metal wrapped awning with LED night light strip.



Another feature that we've taken from residential construction is our super quiet "HP" (High performance) 15,000 BTU air conditioning system, which includes a larger compressor and cold air returns! This means 30% more air is being forced into the coach than a standard 15,000 BTU air conditioner.



These day shades with blackout roller shades offer the best of both worlds. They're actually two shades in one – a night fabric lowers completely for privacy, or can be retracted to the top to reveal a full length day shade. Both day and night shades can be set in any position and are designed with speed and length controls for privacy or a scenic view.

OPTIONAL "LEVEL-UP"™ 6 POINT HYDRAULIC STABILIZATION SYSTEM



Rated #1 Customer Preferred Option

Leveling and stabilizing a fifth wheel has never been easier. Patented "Level-Up" technology makes set ups faster, and a lot safer than the older systems. This system stabilizes the coach once the legs have been set.

Cedar Creek

HATHAWAY EDITION

Cedar Creek

HATHAWAY EDITION

Side Walls R-Value (9)

- ◆ Handmade 2" x 2" - 16" (or less) on center sidewalls with individually fastened custom "L" brackets combined with 3M® Silaprene adhesives for a stronger frame without welding or lamination. (475 PSI at 2" per minute, marine grade)

- ◆ Nobel "True" Classic Performance Plus Gelcoat on all exteriors - the best of the best in fiberglass. Don't accept "hi-gloss fiberglass" or "gel-coated" sidewalls - only True Performance Plus Gelcoat stands the test of time.
- ◆ All baggage doors and entry doors are made out of Nobel Classic True Gelcoat exterior to prevent uneven aging of your unit

- ◆ 3M® Silaprene Bonded Sidewalls - resilient, grows stronger with age. Also has outstanding resistance to UV, heat, cold, moisture, oils, gasoline, highway chemicals, and creates a bond that cannot delaminate with time
- ◆ Sidewalls are bolted to the floor with 5/16" x 6-1/2" carriage bolts at each outrigger
- ◆ Glued R-7 fiberglass insulation expanded to its full capacity within the sidewall frame
- ◆ Designed by Forest River, a new unique slide-out seal system for tighter, stronger water protection - first of its class - compare it!
- ◆ Slide rooms insulated on all five sides

Floors R-Value (38)

- ◆ 3" Aluminum frame floor with in-floor heat ducting and radius "L" brackets combined with 3M® Silaprene adhesives
- ◆ Cambered 10" + 2" I-beam "Z" frame with large support outriggers and full length welds
- ◆ 5/8" Tongue and groove plywood floor is attached to the aluminum frame with Silaprene and screwed every 6"
- ◆ Darco waterproof underbelly
- ◆ Fully enclosed 4' x 8' ABS removable panels for easier access into the underbelly. We use wood stringers to attach with no holes in the frame
- ◆ Triple layer insulation enhances the protective values of plywood, vinyl, carpet, carpet pads, tank heaters, etc.
- ◆ 12 Volt tank heaters on all tanks
- ◆ Radiant shield insulation - 97% reflectivity, 3% emission

Roof R-Value (38)

- ◆ Full length 3/8" wood roof decking for a full walk-on roof (Screwed - not stapled)
- ◆ Triple layer insulation supplements the cohesive retention factors of roof decking and rubber membrane
- ◆ 2" x 2" - 16" OC - 5" truss roof rafters with 8" wide circular air duct. Circular ducting combined with our high performance (bigger compressor) air conditioner gives Cedar Creek a 30% increase in air conditioning performance over our competitors in hotter climates
- ◆ Optional second Whisper Quiet roof mount air conditioner (Bedroom)
- ◆ Two ply - Tuff Ply rubber roof membrane with built-in fire retardant. (12 Year warranty)
- ◆ Full length drip rails from the front to the rear of the unit
- ◆ Roof is bolted to sidewall with 5/16" x 3-1/2" carriage bolts
- ◆ Radiant shield insulation - R Value 38, 97% reflectivity, 3% emission
- ◆ Fully ducted 15,000 BTU high output A/C with cold air returns that are also braced and wired for an optional ducted second A/C



Cold room tested to zero degrees Fahrenheit with standard insulation and heating pads.

SUPERIOR PERFORMANCE



Dexter Axles/BrakesSuspension
DEXTER AXLE For Performance and Safety

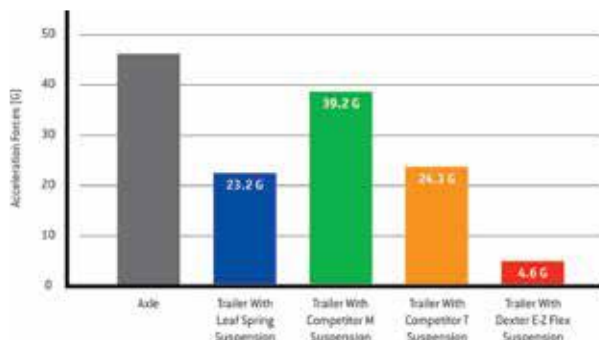
- ◆ Nev-R-Adjust™ Brakes are always properly adjusted for improved stopping power in half the distance
- ◆ E-Z Flex™ rubber equalization system with 1/2" link plates and eight grease zerks per side
- ◆ Heavy duty axles with bronze bushings in shackles (No plastic bushings like our competitors)
- ◆ 16" eight lug, ST, "G" rated, 14 ply tires on 7000 lb. Dexter Axles



Dexter Nev-R-Adjust®
Brakes Standard



Dexter E-Z Flex®
Suspension Standard



Compare acceleration forces experienced by an axle and trailer while traveling over railroad tracks at 30 MPH. The E-Z Flex® System provides up to an 80% reduction in forces on the trailer frame vs. a standard equalizer. E-Z Flex® significantly outperforms all other competitors in the same road test for a smoother, more protective ride for your trailer and cargo.

Aluminum Frame Construction

State-of-the-art construction techniques along with top grade building components give Cedar Creek its reputation for long-lasting quality.

Cedar Creek's famous all aluminum super-structure

Bonded True Nobel Classic™ Pearl gelcoat exteriors

Hehr automotive frameless windows

Optional Level-Up 6-point hydraulic leveling system

The Dexter difference - safety and performance package

Wired for wireless rear camera

Soft top vinyl storm doors

Remote control for slides, hydraulic jacks, awning and security lights

Black metal wrapped A&E awnings with LED night light strip

Radiant Shield thermo-foil R-38 value

R-38 ◆ Heating pads on all tanks



True Nobel Classic fiberglass gelcoat exteriors and end walls.
Truly the best of the best in fiberglass. Accept no imitations.



Residential Glasswool Insulation,
designed by nature.



Cedar Creek's famous residential
All-aluminum Super-structure
(Roof, sidewalls, and floor) on
16" centers or less.



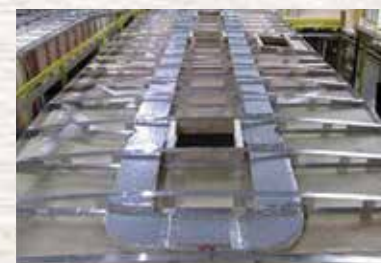
3" Aluminum floor studs, heat duct and
5/8" tongue and groove plywood floor.



Aluminum window frames.

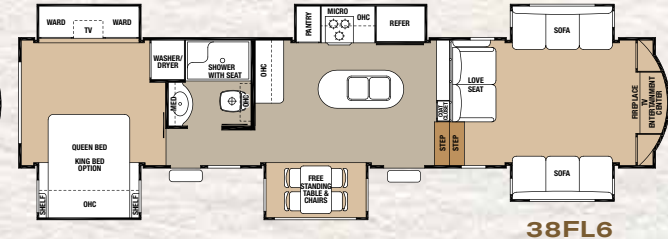
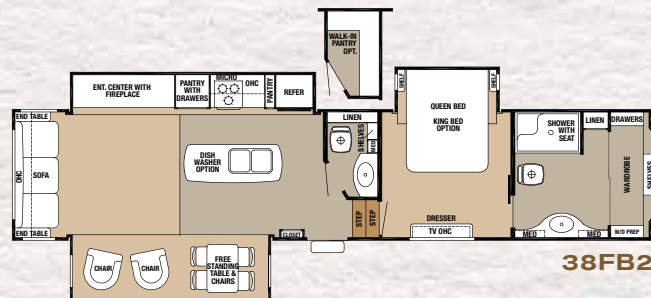
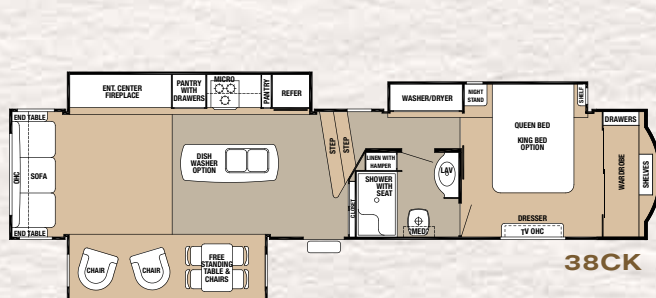
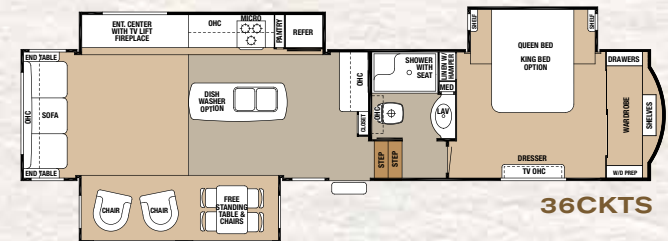
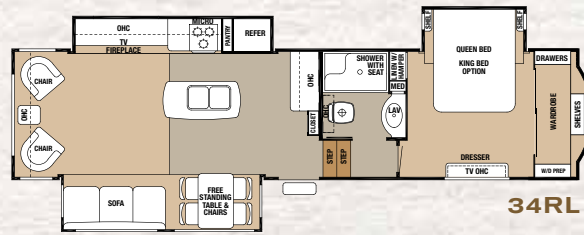


R-38 Radiant shield Thermo-foil wrap through ceilings, underbellies
and under front caps.



High-Performance Quiet Zone™ Ducted
Air System with a 15,000-BTU HP air
conditioner, a residential-style return
air duct system and Comfort Control
Center creates a dynamic combination
for powerful results. It's the most efficient
AC system in existence with both the
industry's highest-performance AC and
the industry's lowest power draw, with
second Bedroom air conditioner too!





SPECIFICATIONS

MODEL	34RE	34RL	36CKTS	38CK	38FB2	38FL6
GVWR	15853 lb	16173 lb	16407 lb	16235 lb	16390 lb	18000 lb
Hitch Weight	1853 lb	2173 lb	2500 lb	2310 lb	2390 lb	2715 lb
UVW	11955 lb	11440 lb	12670 lb	13260 lb	12920 lb	14290 lb
CCC	3898 lb	4733 lb	3737 lb	2975 lb	3470 lb	3710 lb
Exterior Length	37'	36' 8"	39' 10"	40' 7"	41' 10"	41' 9"
Exterior Height	13'	13'	13'	13'	13'	13'
Exterior Width	96"	96"	96"	96"	96"	96"
Fresh Water	69 gal	69 gal	69 gal	69 gal	69 gal	69 gal
Gray Water	80 gal	80 gal	80 gal	80 gal	80 gal	80 gal
Black Water	40 gal	40 gal	40 gal	40 gal	80 gal	40 gal
Awning Size	16 ft	16 ft	18 ft	18 ft	18 ft	21 ft

All Weights listed above are base weights. Weight capacities +/- 5%. NOTE: All fifth wheel lengths include extended pin box and 4" bumper. Model number of any particular unit does not necessarily reflect the overall length of the unit itself.

GVWR (Gross Vehicle Weight Rating) - is the maximum permissible weight of the unit when fully loaded. It includes all weights, inclusive of all fluids, cargo, optional equipment and accessories. For safety and product performance do NOT exceed the GVWR.

GAWR (Gross Axle Weight Rating) - is the maximum permissible weight, including cargo, fluids, optional equipment and accessories that can be safely supported by a combination of all axles.

UVW (Unloaded Vehicle Weight)* - is the typical weight of the unit as manufactured at the factory. It includes all weight at the unit's axle(s) and tongue or pin and LP Gas. The UVW does not include cargo, fresh potable water, additional optional equipment or dealer installed accessories.

CCC (Cargo Carrying Capacity)** - is the amount of weight available for fresh potable water, cargo, additional optional equipment and accessories. CCC is equal to GVWR minus UVW. Available CCC should accommodate fresh potable water (8.3 lbs. per gallon). Before filling the fresh water tank, empty the black and gray tanks to provide for more cargo capacity.

*Estimated Average based on standard build optional equipment ** Estimated average based on standard build optional equipment

Each Forest River RV is weighed at the manufacturing facility prior to shipping. A label identifying the unloaded vehicle weight of the actual unit and the cargo carrying capacity is applied to every Forest River RV prior to leaving our facilities.

The load capacity of your unit is designated by weight, not by volume, so you cannot necessarily use all available space when loading your unit.

All information contained in this brochure is believed to be accurate at the time of publication. However, during the model year, it may be necessary to make revisions and Forest River, Inc., reserves the right to make all such changes without notice, including prices, colors, materials, equipment and specifications as well as the addition of new models and the discontinuance of models shown in this brochure. Therefore, please consult with your Forest River dealer and confirm the existence of any materials, design or specifications that are material to your purchase decision.

FEATURES AND OPTIONS

HATHAWAY EDITION PACKAGE

- ◆ 48" LED TV in Living Room
- ◆ Jensen Slimline AM/FM/ DVD/CD/USB blue tooth stereo system with powered subwoofer, (4) interior speakers, and (2) exterior speakers
- ◆ Golden Glazed European Beech cabinetry
- ◆ Sculpted solid hardwood slideroom fascia in living room
- ◆ Larger fireplace with solid wood surround
- ◆ Newly designed window valances
- ◆ New LED lighting fixtures
- ◆ Day shade and blackout roller shades
- ◆ La-Z-Boy® Sofa and recliner set with lifetime warranty on parts
- ◆ New wallboard
- ◆ Solid surface LG® countertops with full twin stainless steel under-mounted sinks
- ◆ Recessed stainless steel large oven with Piezo igniter, sealed burners and glass cover with solid surface handle
- ◆ Congoleum® Diamondflor
- ◆ New full panel backsplash
- ◆ Island overhead with pendant lights and island surround
- ◆ Self-closing full extension drawer guides
- ◆ Large medicine cabinet with side shelves in bathroom
- ◆ Newly designed shower
- ◆ "True" pearl gelcoat exterior – truly the best of the best in gelcoat exteriors. Stronger, thicker and keeps it's high gloss longer than our competitors less expensive gel "coated" exteriors
- ◆ Quad level entry step
- ◆ Black metal wrapped electric awning with LED night lighting strip
- ◆ Friction hinge entry door

CEDAR CREEK EXPLORER PACKAGE

- ◆ DEXTER® SAFETY AND PERFORMANCE PACKAGE
 - Nev-R-Adjust™ brakes are always properly adjusted for improved stopping power in half the distance
 - E-Z Flex™ rubber equalization system with 1/2" link plates and (8) grease zerks per side
 - Heavy duty axles with bronze bushings in shackles (No plastic bushings like our competitors)
- ◆ 16" 8-lug, ST, "G" rated tires on 7,000 lb. Dexter axles
- ◆ 17.5" 8-lug, ST, "H" rated tires on 8,000 lb. Dexter axles (38FL6 only)
- ◆ Prepped for wireless observation system



DEXTER AXLE

- ◆ Hehr® automotive frameless windows with tinted safety glass – all windows open!
- ◆ 19 Cu. ft. stainless steel electric refrigerator with inverter and ice maker
- ◆ Dirt Devil® central vacuum system automatic dustpan
- ◆ Front and rear "True" gelcoat caps
- ◆ Winegard® HD ready pre-wire
- ◆ One year of Coach Net roadside assistance
- ◆ Membership to the Forest River Owner's Group (F.R.O.G.)

EXTERIOR FEATURES

- ◆ 1-1/4" thick, insulated, compartment doors with gas lifts, slam door latches and dedicated key lock
- ◆ "Soft top" storm doors
- ◆ 50 Amp service
- ◆ 65 Amp power converter
- ◆ Central docking station
- ◆ Satellite and cable hook-ups located in docking station wired into the living room and bedroom
- ◆ Ducted 15,000 BTU Duo-Therm "HP" (High performance) air conditioner with larger compressor, circular motion 8" ductwork and cold air returns. The larger compressor forces 30% more air into the coach - the most powerful air conditioner in RVs today.
- ◆ Hydraulic front landing jacks placed outside the frame with 8" round landing pads
- ◆ Braced and wired for second air conditioner
- ◆ Rear ladder
- ◆ LED high bright lights on the front and rear of the coach
- ◆ Lighted entry step
- ◆ Radius wrapped bottom metal skirt to the frame
- ◆ Remote control operates safety entry lights, slide-outs, electric awning and jack legs of the 6-point leveling system
- ◆ Selector switches for slide-rooms

LIVING ROOM

- ◆ Ceiling fan with light
- ◆ Lambrequin style valance with curtains throughout except bedroom
- ◆ Newly designed solid wood slideroom fascia (Most competitors use vinyl wrapped foam)
- ◆ Shaw® R2X stain and soil resistant carpeting in all living room and bedroom areas
- ◆ (1) Barstool (N/A 34RE, 38FL6)

KITCHEN FEATURES

- ◆ Create-A-Breeze Fantastic fan with thermostat and rain sensor in the kitchen
- ◆ Stainless steel 30" over the range microwave with built-in vent
- ◆ Hidden hinges
- ◆ Crown molding complimenting all overhead cabinets in kitchen area
- ◆ Free standing table with hidden table leaf extension, (2) standard chairs and (2) folding chairs
- ◆ Pantry (Where applicable)
- ◆ Golden Glazed European Beech drawer fronts with Baltic Birch sides and ends
- ◆ Golden Glazed European Beech cabinet doors with hardwood stiles
- ◆ Toe kicks at the base of the kitchen cabinetry

BATHROOM

- ◆ Granite-Light bathroom sink
- ◆ 18" Tall porcelain toilet with circular flow flush system
- ◆ 12" Ten blade bathroom breeze power bath vent with convenient wall switch
- ◆ Residential bath towel rack and toilet paper holder
- ◆ 48" One-piece fiberglass residential shower with large seat, upgraded shower head, wrap around storage ledges and triple sliding glass doors

MISCELLANEOUS FEATURES

- ◆ Suburban two-stage on demand water heater
- ◆ 12 Volt battery disconnect
- ◆ Arched radius ceilings for additional height throughout
- ◆ Cedar Creek switch control center
- ◆ Dometic comfort control center with dual zone control for heating and cooling
- ◆ LP gas/carbon monoxide detector
- ◆ Smoke detector
- ◆ Solid state 65 amp power converter
- ◆ Component plate with HDMI® in entertainment center
- ◆ Suburban 35,000 and 40,000 BTU furnaces
- ◆ Wall mount monitor panel

BEDROOM FEATURES

- ◆ 32" LED Jensen Television
- ◆ Serta® Winding Road 60" x 80" Queen bed with 2" x 2" Finished bed base with gas lifts, side ventilation windows
- ◆ Ceiling mounted overhead reading lights with individual switches
- ◆ Walk-in front closet
- ◆ Radius ceilings with a full 6'9" of bedroom height
- ◆ Solid wood dresser top (No Formica)

- ◆ Washer/dryer prep that allows for either combination or stack washer/dryer

OPTIONS

- ◆ Level-Up hydraulic 6-point leveling system – levels within 1/10" in less than 60 seconds
- ◆ Second 13,500 BTU ducted "Whisper Quiet" Penguin air conditioner
- ◆ Third 13,500 BTU ducted "Whisper Quiet" Penguin air conditioner with power management system
- ◆ 13 Cu. ft. side-by-side gas/electric refrigerator with raised wood fronts
- ◆ 20 Cu. ft. stainless steel French door electric refrigerator with pull-out lower freezer compartment, inverter and ice maker (N/A 34RL)
- ◆ 30" Stainless steel convection oven/microwave
- ◆ Stainless steel dishwasher
- ◆ 72" x 80" King size bed with Serta® Winding Road mattress
- ◆ Serta® Bellagio Luxury Queen and King Mattress with Gel Memory Foam Top
- ◆ Awning toppers
- ◆ Metal wraps for awning toppers
- ◆ 12' Slide room awning with metal wrap (N/A 38FL6)
- ◆ 1-1/4" Bike rack receiver hitch
- ◆ Create-A-Breeze Fantastic fans with thermostat and rain sensor in the bedroom area
- ◆ Exterior paint packages - custom or full body touring edition
- ◆ Heat pump on main air conditioner
- ◆ Matching ottoman with hidden storage
- ◆ Theater seating IPO recliners (No charge)
- ◆ Power theater seating IPO recliners
- ◆ Vinyl flooring throughout, except in bedroom and slides (No charge)
- ◆ Rebond carpet pad
- ◆ LP generator prep
- ◆ Cadet self-regulating bedroom wall heater
- ◆ Splendide® combination washer/dryer
- ◆ Splendide® stackable washer/dryer – wired individually to allow simultaneous wash/dry cycles
- ◆ Wireless rear observation camera
- ◆ Onan 5.5 kw Marquis Gold LP generator
- ◆ Dual pane windows
- ◆ Trail Air™ air ride hitch coupler
- ◆ 50 Amp cord reel
- ◆ Solar prep
- ◆ 12 Gal. gas/electric water heater
- ◆ 200W Solar panel



BURGUNDY



ARIZONA BEIGE



CLASSIC CHAMPAGNE



MIDNIGHT MIST

CUSTOM PAINT

CEDAR CREEK "TOURING EDITION" FULL BODY PAINT

Full Body Paint, adorned with Cedar Creek graphics, will turn heads wherever you travel. These bold new exterior options are offered along with our Standard Graphics and Custom Paint choices.



Forest River, Inc. encourages our customers to purchase their Forest River products from a local dealership whenever possible for the following reasons:

It is the goal of Forest River, Inc. that all of our RV owners fully enjoy the RV experience and that customer satisfaction meets or exceeds their expectations!

- 1) Forest River, Inc. dealers are independently owned and operated businesses so priority service and scheduling is at their discretion and is often provided to customers that purchased their unit at that dealership.
- 2) Purchasing locally allows customers to establish meaningful relationships with a dealer, enhancing the RV experience through assistance with product questions, user tips or RV regulations for your state or country, and much more!
- 3) Canadian customers must meet requirements to bring an RV purchased out of the country to their home. These requirements may involve additional inspections and certifications, taxes and fees. Your local Canadian Dealer is a professional at meeting these requirements.
- 4) Scheduling timely warranty repairs and adjustments through a local dealership provides far greater flexibility and convenience to you, the customer!



PRE-DELIVERY INSPECTION FACILITY

20,000 square feet of quality assurance. The bare essentials for a premium product. This state-of-the-art facility gives immediate daily feedback to production for quality assurance in every unit built.

FREE MEMBERSHIP
to Forest River Owners' Group

www.forestriverfrog.com



24/7 EMERGENCY ROADSIDE ASSISTANCE

For a worry-free ownership experience

Forest River includes one year of Coach-Net RV Technical & Roadside Assistance with each RV purchase. Whether new to the RV lifestyle or an experienced RV enthusiast, Forest River owners have 24/7 access to technical, operational and emergency road service coverage throughout the US & Canada. Coach-Net's fast, dependable service is just a phone call away.

Coach-Net®

RV Technical & Roadside Assistance



Learn More

Scan this barcode using a QR Reader on your smart phone to learn more about Forest River.



A Berkshire Hathaway company.

Cedar Creek

HATHAWAY EDITION

The Smart Choice for the Experienced RV'er

FOREST RIVER INC. / CEDAR CREEK DIVISION

501 Hawpatch Road / Topeka, IN 46571 ♦ Phone : 260-593-2404 / Fax: 260-593-2447

Parts & Service / Ph: 260-593-3017 / Fax: 260-593-2645

On The Web at: www.forestriverinc.com/cedarcreek

All information contained in this brochure is believed to be accurate at the time of publication. However, during the model year, it may be necessary to make revisions and Forest River, Inc., reserves the right to make all such changes without notice, including prices, colors, materials, equipment and specifications as well as the addition of new models and the discontinuance of models shown in this brochure. Therefore, please consult with your Forest River dealer and confirm the existence of any materials, design or specifications that are material to your purchase decision. ©2015 Cedar Creek, a Division of Forest River, Inc., a Berkshire Hathaway company. All Rights Reserved. 11/15

YOUR CEDAR CREEK DEALER

LaMESA RV
REC VAN
LaMesaRV.com
800-496-8778

Cedar Creek
FIFTH WHEELS
CHAMPAGNE EDITION



THE SMART CHOICE FOR THE EXPERIENCED RV'ER

38EL



CHAMPAGNE EDITION PACKAGE

- ◆ Two-toned painted caps with full clear coat
- ◆ Cedar Creek All Aluminum Super Structure
- ◆ "True" high gloss gelcoat exterior
- ◆ Automatic 6-point hydraulic leveling system
- ◆ 12V Powered 50 Amp cord reel
- ◆ Dual battery slide out trays
- ◆ Aluminum (4) entry steps
- ◆ Full metal wrap skirt to the frame
- ◆ 1-1/4" bike hitch receiver
- ◆ Second 15,000 BTU high capacity, low profile, ducted air conditioner with bigger compressor
- ◆ 32" Entry door with "Soft Top" storm door
- ◆ Ceramic deluxe toilet with sprayer
- ◆ Maximum storage pantry
- ◆ LG® solid surface countertops
- ◆ Island overhead with large LED lights
- ◆ Designer flooring by Congoleum®
- ◆ Stainless steel 20 cu. ft. French door refrigerator with inverter, icemaker and water dispenser
- ◆ Stainless steel 30" convection/microwave oven
- ◆ Induction cooktop with cookware
- ◆ Dining table with (2) fixed chairs and (2) folding chairs with leaf extension
- ◆ Wine refrigerator with storage rack
- ◆ La-Z-Boy® power theater seating
- ◆ La-Z-Boy® 90" deluxe hide-a-bed sofa
- ◆ 60" Samsung® LED TV in living room
- ◆ Sculpted hardwood slide room fascia
- ◆ 48" Fireplace with regulated heat control and hidden storage
- ◆ Upgraded LED lighting package
- ◆ Maple cabinet doors with hidden hinges
- ◆ Rebond carpet pad
- ◆ Deluxe day/night roller shades
- ◆ 60" LG® countertop in bath with contour design sinks
- ◆ (2) Medicine cabinets
- ◆ Bellagio residential series king mattress by Serta®
- ◆ Cadet regulated wall heater in bedroom
- ◆ Continuous, on demand, hot water system
- ◆ Front closet mirrors and storage
- ◆ 32" LED TV in bedroom
- ◆ (9) Drawer tall boy bedroom dresser

STANDARD FEATURES

- ◆ Nev-R-Adjust® brakes
- ◆ E-Z Flex® rubber equalization system with 1/2" link plates and (8) greased zerks per side
- ◆ Heavy duty axles with bronze bushings in shackles (No plastic bushings like our competitors)
- ◆ 16" 8-lug, ST, "G" rated tires on 7,000 lb. Dexter® axles
- ◆ Prepped for wireless observation system
- ◆ Hehr® thermopane automotive frameless windows with tinted safety glass
- ◆ Winegard® HD ready pre-wire



- ◆ 1-1/4" thick, insulated, compartment doors with gas lifts, slam door latches and dedicated key lock
- ◆ 50 Amp service
- ◆ 65 Amp power converter
- ◆ Central docking station
- ◆ Satellite and cable hook-ups located in docking station wired into the living room and bedroom
- ◆ Ducted 15,000 BTU "HP" (High performance) air conditioner with larger compressor, circular motion 8" ductwork and cold air returns
- ◆ Rear ladder
- ◆ LED bright lights on front and rear gelcoat caps
- ◆ Safety light on entry steps
- ◆ Selector switches for slide-rooms
- ◆ Ceiling fan
- ◆ Valance with solid wood window frames throughout except bedroom
- ◆ Shaw® R2X stain and soil resistant carpeting
- ◆ (2) Create-A-Breeze Fantastic fans with thermostats and rain sensors in the kitchen and bathroom
- ◆ Crown molding complimenting all overhead cabinets
- ◆ Toe kicks at the base of the kitchen cabinetry
- ◆ 48" Big Man fiberglass residential shower with large seat, upgraded shower head, wrap around storage ledges and triple sliding glass doors
- ◆ 12V Battery disconnect
- ◆ Arched radius ceilings for additional height throughout
- ◆ Cedar Creek switch control center
- ◆ Dometic comfort control center with dual zone control for heating and cooling
- ◆ LP gas/carbon monoxide detector
- ◆ Smoke detector
- ◆ Suburban 40,000 BTU furnace
- ◆ Walk-in front closet



- ◆ Ceiling mounted overhead reading lights with individual switches
- ◆ Radius ceilings with a full 6'9" of bedroom height
- ◆ Solid wood dresser top
- ◆ Washer/dryer prep
- ◆ Dirt Devil® central vacuum system
- ◆ Keyless entry system
- ◆ One year of Coach Net roadside assistance
- ◆ Membership to the Forest River Owner's Group

OPTIONS

- ◆ Kristal full body paint with clear coat smooth wall finish
- ◆ 12' Slide room awning with metal weather shield
- ◆ LP generator prep
- ◆ 5.5 Onan® Marquis Gold LP generator with generator prep
- ◆ 15,000 BTU high capacity, low profile, third air conditioner with power management system
- ◆ Heat pump on main air conditioner
- ◆ 200 Watt solar panel with solar prep
- ◆ Black A&E awning toppers with metal caps
- ◆ Vinyl flooring throughout except bedroom and slides
- ◆ 13 Cu. ft. side by side gas/electric refrigerator with raised wood front
- ◆ Splendide® front loading washer and dryer
- ◆ Splendide® combination washer and dryer with vent kit
- ◆ Stainless steel dishwasher in island (38EL only)
- ◆ 110V Bedroom refrigerator in front closet
- ◆ (2) La-Z-Boy® recliners IPO power theater seating
- ◆ Matching ottoman with interior storage
- ◆ Queen mattress IPO king
- ◆ Trailair air ride hitch coupler
- ◆ Wireless rear observation camera

MODEL	38EL
GVWR	16485 lb
Hitch Weight	2485 lb
UVW	13989 lb
CCC	2496 lb
Exterior Length	41'7"
Exterior Height	13'5"
Exterior Width	96"
Fresh Water with on demand hot water system	57 gal
Gray Water	80 gal
Black Water	40 gal

All Weights listed above are base weights. Weight capacities +/- 5%. NOTE: All fifth wheel lengths include extended pin box and 4" bumper. Model number of any particular unit does not necessarily reflect the overall length of the unit itself.

GVWR (Gross Vehicle Weight Rating) - is the maximum permissible weight of the unit when fully loaded. It includes all weights, inclusive of all fluids, cargo, optional equipment and accessories. For safety and product performance do NOT exceed the GVWR.

GAWR (Gross Axle Weight Rating) - is the maximum permissible weight, including cargo, fluids, optional equipment and accessories that can be safely supported by a combination of all axles.

UVW (Unloaded Vehicle Weight)* - is the typical weight of the unit as manufactured at the factory. It includes all weight at the unit's axle(s) and tongue or pin and LP Gas. The UVW does not include cargo, fresh potable water, additional optional equipment or dealer installed accessories.

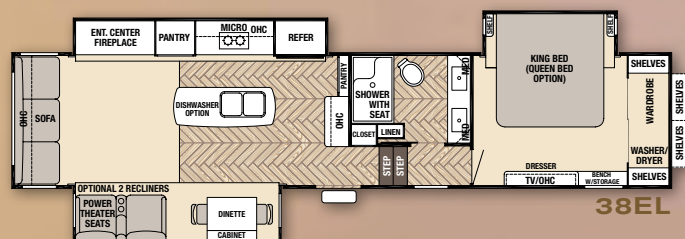
CCC (Cargo Carrying Capacity)** - is the amount of weight available for fresh potable water, cargo, additional optional equipment and accessories. CCC is equal to GVWR minus UVW. Available CCC should accommodate fresh potable water (8.3 lbs. per gallon). Before filling the fresh water tank, empty the black and gray tanks to provide for more cargo capacity.

*Estimated Average based on standard build optional equipment.

**Estimated average based on standard build optional equipment.

Each Forest River RV is weighed at the manufacturing facility prior to shipping. A label identifying the unloaded vehicle weight of the actual unit and the cargo carrying capacity is applied to every Forest River RV prior to leaving our facilities.

The load capacity of your unit is designated by weight, not by volume, so you cannot necessarily use all available space when loading your unit.



**MORE CHAMPAGNE
MODELS COMING SOON!**



Watch your favorite programs on this huge 60" LED smart TV. The 12 volt Jensen home stereo system integrates with popular smart devices including Apple's iPhone, iPod, iPad, Bluetooth streaming audio, video, MP3 and weather band information. Conveniently control the stereo and interior/exterior speakers with your phone, or the remote from inside or outside the coach.

Cedar Creek
CHAMPAGNE EDITION

The Smart Choice for the Experienced RV'er
FOREST RIVER INC. / CEDAR CREEK DIVISION

501 Hawpatch Road ♦ Topeka, IN 46571

Phone: 260-593-2404 ♦ Fax: 260-593-2447

Parts & Service: Phone: 260-593-3017 ♦ Fax: 260-593-2645

On the web at: www.forestriverinc.com/cedarcreek

All information contained in this brochure is believed to be accurate at the time of publication. However, during the model year, it may be necessary to make revisions and Forest River, Inc., reserves the right to make all such changes without notice, including prices, colors, materials, equipment and specifications as well as the addition of new models and the discontinuance of models shown in this brochure. Therefore, please consult with your Forest River dealer and confirm the existence of any materials, design or specifications that are material to your purchase decision.
©2016 Cedar Creek, a Division of Forest River, Inc., a Berkshire Hathaway company. All Rights Reserved. 3/16

YOUR CEDAR CREEK CHAMPAGNE DEALER

LaMESA REC VAN

LaMesaRV.com
800-496-8778



PRE-DELIVERY INSPECTION FACILITY

20,000 square feet of quality assurance. The bare essentials for a premium product. This state-of-the-art facility gives immediate daily feedback to production for quality assurance in every unit built.



Forest River, Inc. encourages our customers to purchase their Forest River products from a local dealership whenever possible for the following reasons:

- 1) Forest River, Inc. dealers are independently owned and operated businesses so priority service and scheduling is at their discretion and is often provided to customers that purchased their unit at that dealership.
- 2) Purchasing locally allows customers to establish meaningful relationships with a dealer, enhancing the RV experience through assistance with product questions, user tips or RV regulations for your state or country, and much more!
- 3) Canadian customers must meet requirements to bring an RV purchased out of the country to their home. These requirements may involve additional inspections and certifications, taxes and fees. Your local Canadian Dealer is a professional at meeting these requirements.
- 4) Scheduling timely warranty repairs and adjustments through a local dealership provides far greater flexibility and convenience to you, the customer!

It is the goal of Forest River, Inc. that all of our RV owners fully enjoy the RV experience and that customer satisfaction meets or exceeds their expectations!

24/7 EMERGENCY ROADSIDE ASSISTANCE

For a worry-free ownership experience Forest River includes one

year of Coach-Net RV Technical & Roadside Assistance with each RV purchase. Whether new to the RV lifestyle or an experienced RV enthusiast, Forest River owners have 24/7 access to technical, operational and emergency road service coverage throughout the US & Canada. Coach-Net's fast, dependable service is just a phone call away.

Coach-Net®
RV Technical & Roadside Assistance



Learn More

Scan this barcode using a QR Reader on your smart phone to learn more about Forest River.



A Berkshire Hathaway company.

FREE MEMBERSHIP
to Forest River Owners' Group

www.forestriverfrog.com



Cedar Creek

SILVERBACK EDITION

FIFTH WHEELS

Cedar Creek
SILVERBACK EDITION



THE SMART CHOICE FOR THE EXPERIENCED RV'ER



Cedar Creek

SILVERBACK EDITION

CEDAR CREEK SILVERBACK EDITION PACKAGE

- 48" LED TV in living room (N/A 37BH,31RK)
- Jensen 12 volt CD/DVD, AM/FM, Bluetooth, MP3/USB stereo system with video streaming capabilities, 4 ceiling mount speakers and two waterproof exterior speakers
- New Maple hardwood cabinet doors
- New ceiling cove molding
- New wallboard
- Upgraded solid wood slide room fascia in living room
- Rebond carpet pad
- Electric fireplace
- Updated Shaw carpet and Congoleum Diamondfloor™ flooring
- La-Z-Boy® sofa and recliners with lifetime warranty on parts
- Dirt Devil central vacuum system
- New recessed stove top with glass cover and LG solid surface handle
- New full panel backsplash
- Upgraded kitchen faucet
- New stainless steel sinks
- New self-closing drawer guides
- 32" LED TV in bedroom
- New bedding and window treatments in bedroom
- New larger mirrored closet doors
- Medicine cabinet in bathroom
- New quad entry step
- Hehr automotive frameless windows
- New friction hinge entry door
- Black A&E metal weather shield for awning
- New pearl front cap with new upgraded graphics package
- LED lighting under awning
- 50 amp cord reel
- 3 battery compartment

DECOR

STORM



COFFEE



PEPPERCORN



THE SILVERBACK ADVANTAGE

The New Cedar Creek Silverback Edition surrounds you in luxury. Experience rich interiors, brand name appliances and our famous all aluminum super-structure... a few of the many standard hallmarks of quality and value Cedar Creek is known for.



33IK

33IK

Cedar Creek

SILVERBACK EDITION

THE PERFECT CHOICE FOR LIFE'S GREAT ADVENTURES

29RE This popular rear living room provides plenty of comfortable living space for visiting family and friends. The La-Z-Boy® hide-a-bed Comfort Sleep sofa converts to an additional sleeping area for your guests. The beautiful rear entertainment wall, with brick fireplace surround, brings an inviting and residential look to this spacious floorplan.





31RK This open rear kitchen has an abundance of storage and space. This floorplan can also accommodate our optional 11 cu. ft. electric only refrigerator, 13 cu. ft. gas/electric side-by-side refrigerator or 19 cu. ft. electric only refrigerator (pictured above.)

L A B O Y® RECLINERS AND THEATRE SEATING



Live life comfortably with our standard La-Z-Boy® sofa sets. Choose Beige or Mahogany recliners, or upgrade to our optional theater seating for residential comfort that lasts a lifetime.



37RL This rear living area is designed for entertaining, with seating for up to six people. Comfortable La-Z-Boy® residential furniture has a lifetime warranty on all parts.

The kitchen is the center of daily activity. The 37BH is loaded with storage, including this abundant floor-to-ceiling pantry. It's available with your choice of an optional 11 cu. ft. electric refrigerator, 13 cu. ft. gas/electric side-by-side refrigerator or 19 cu. ft. electric refrigerator.

OUTDOOR CONVENIENCE

This standard outside kitchen provides the ultimate in outdoor convenience.

With a sink, faucet, enamel metal weatherproof cabinetry, refrigerator, microwave and RVQ gas grill all within easy reach, you can cook, clean-up, and store everything you need without missing all the outdoor fun!





37BH This family-friendly bunk house is big on storage space. The standard 12' Super Sofa with two sliding table tops creates a comfortable lounge area for up to eight people or a pull-out sleeper sofa for extra friends.



The 37BH bunk house provides ample living space for your guests or family. Silverback's exclusive cathedral ceilings in the rear bunkroom slide-room provide plenty of headroom above the top bunk. Extra wide bunks can accommodate the choice of an optional tri-fold Comfort Sleep sofa, or a jackknife sofa, to maximize sleeping space.

A convenient second bathroom is accessible from the bunk house.



CEDAR CREEK'S FAMOUS ALL ALUMINUM SUPER STRUCTURE

CHECK OUT OUR CONSTRUCTION VIDEO AT WWW.FORESTRIVERINC.COM/SILVERBACK

ROOF - CALCULATED R-VALUE = R-38

- ◆ Roof - calculated R-Value = 38
- ◆ Radiant shield insulation, 97% reflective/3% emission (Valued at R-38)

- ◆ 2 Layers of residential home Eco-Batt glasswool insulation (Valued at R-14)
- ◆ Triple layer insulation supplements the cohesive retention factors of roof decking and rubber membrane
- ◆ Attic vents
- ◆ Full length 3/8" wood roof decking for a full walk on roof

- ◆ 2" x 2" - 16" OC 5" Aluminum truss roof rafters
- ◆ 2-Ply Tuff Ply rubber roof membrane with built-in fire retardant and 12 year warranty
- ◆ Full length drip rails from the front to the rear of the unit
- ◆ Roof is bolted to sidewall with 5/16" x 3-1/2" carriage bolts
- ◆ 5" Radius roof



COLD ROOM TESTED

- ◆ Calculated R-value = R-38 in the roof and floor
- ◆ 12 Volt heating pads on all tanks
- ◆ 2 Layers of residential insulation
- ◆ 1 Layer of radiant shield Thermo-foil



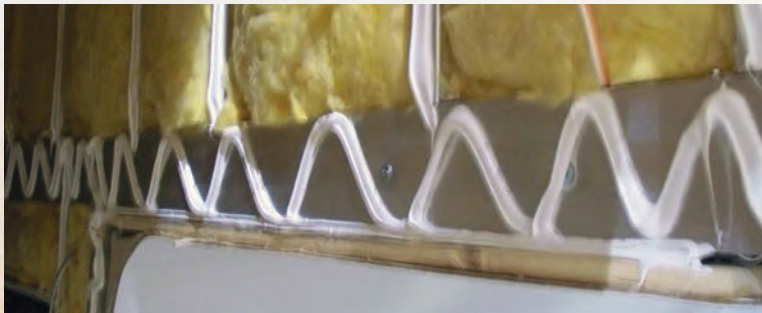
Cedar Creek
SILVERBACK EDITION

FLOORS & UNDERBELLY - CALCULATED R-VALUE = R-38

- ◆ Cambered I-beam frame (10" on 29RE, 29IK; 12" on all others) with large support outriggers and full length welds
- ◆ Fully enclosed underbelly with 4' x 8' ABS removable panels for easy access to the tanks
- ◆ Radiant shield insulation, 97% reflective/3% emission (Valued at R-38)
- ◆ 2 Layers of residential home Eco-Batt glasswool insulation (Valued at R-14)
- ◆ 12 V Heating pads on ALL tanks
- ◆ Handmade 3" aluminum frame floor with in-floor heat ducting
- ◆ 5/8" tongue and groove plywood floor decking held down by Silaprene super adhesive and screws every 6" in floor joists
- ◆ Triple layer insulation enhances the protective values of plywood, vinyl, carpet, carpet pads, tank heaters, etc..
- ◆ "True" Classic Performance Plus Gelcoat on all exteriors - the best of the best in fiberglass. Don't accept "Hi-Gloss Fiberglass" or "Gel-Coated" sidewalls - only True Performance Plus Gelcoat stands the test of time.
- ◆ All 1-1/2" thick baggage doors and entry doors are made out of "True" Classic Performance Gelcoat to prevent uneven aging of your unit!
- ◆ Sidewalls are bolted to the floor with 5/16" x 6-1/2" carriage bolts at each outrigger
- ◆ Glued R-7 Eco-Batt glasswool insulation, expanded to full capacity within the sidewall frame
- ◆ Designed by Cedar Creek, a unique slide out seal system for tighter, stronger water protection - first of its class - compare it!
- ◆ Slide rooms insulated on all five sides



Aluminum studded sidewalls and roof trusses on 16" centers or less



Thick Silaprene super adhesive (475 PSI) guarantees solid contact between the True bonded gelcoat and aluminum frame without lamination



2" x 3" Aluminum floor studs



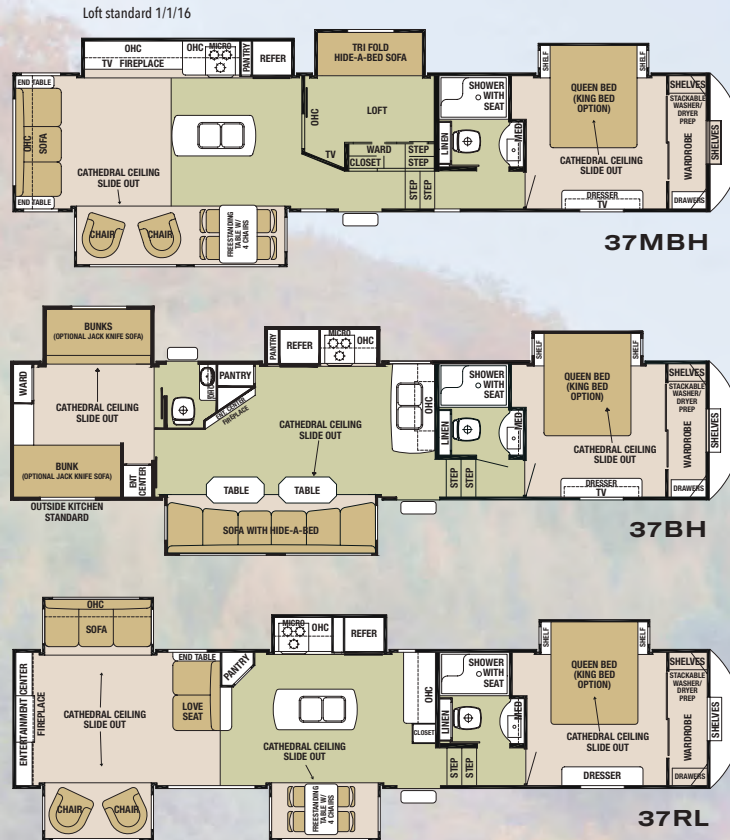
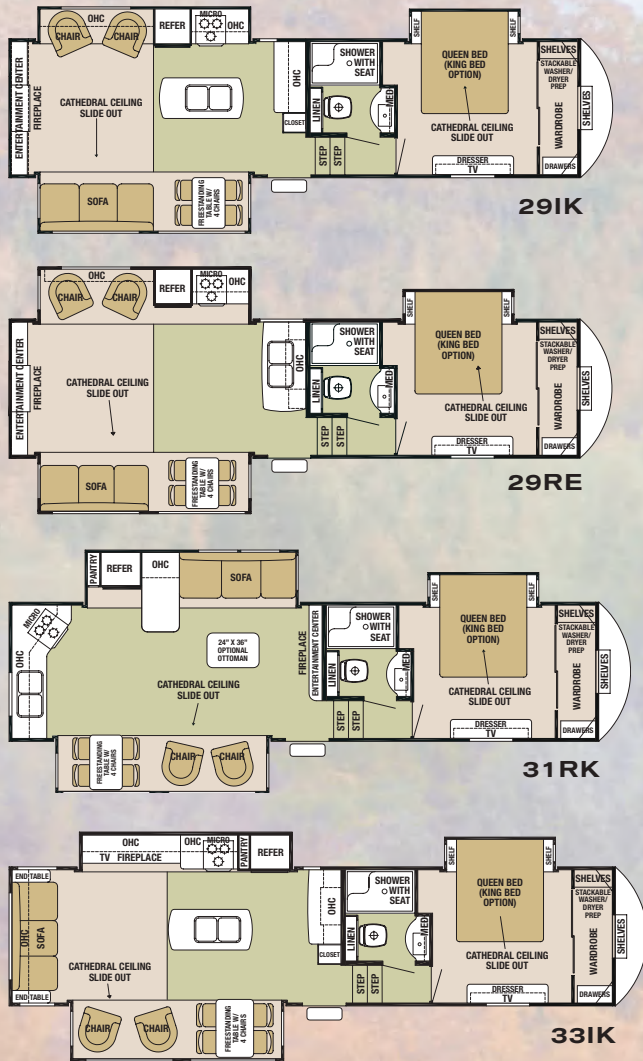
R-38 Radiant shield Therma-foil wrap through ceilings, underbellies and under front cap.



Residential, glasswool insulation designed by nature

2" THICK SIDE WALLS - CALCULATED R-VALUE = R-9

- ◆ Cedar Creek's famous all aluminum super-structure. Handmade 2"x 2"/16" (or less) on center sidewalls and individually fastened custom "L" brackets combined with 3M® Silaprene super adhesives for a strong flexible frame without welding or lamination. (475 PSI at 2" per minute) - because we depend on the frame for our strength!



All Weights listed above are base weights. Weight capacities +/- 5%.
NOTE: All fifth wheel lengths include extended pin box and 4" bumper.
Model number of any particular unit does not necessarily reflect the overall length of the unit itself.

MODEL	29IK	29RE	31RK	33IK	37MBH	37BH	37RL
GVWR	13965 lb.	13985 lb.	14005 lb.	14067 lb.	16135 lb.	15940 lb.	16250 lb.
Hitch Weight	1965 lb.	1985 lb.	2005 lb.	2067 lb.	2135 lb.	1940 lb.	2250 lb.
UVW	10630 lb.	10705 lb.	10555 lb.	10880 lb.	12620 lb.	12650 lb.	12830 lb.
CCC	3335 lb.	3280 lb.	3450 lb.	3187 lb.	3515 lb.	3290 lb.	3420 lb.
Exterior Length	33' 11"	33' 11"	35' 4"	36' 11"	42' 2"	39' 11"	41' 6"
Exterior Height	12' 9"	12' 9"	12' 9"	12' 9"	12' 9"	12' 9"	12' 11"
Exterior Width	96"	96"	96"	96"	96"	96"	96"
Fresh Water	67 gal.	67 gal.	67 gal.	67 gal.	67 gal.	67 gal.	67 gal.
Gray Water	80 gal.	80 gal.	80 gal.	80 gal.	80 gal.	80 gal.	80 gal.
Black Water	40 gal.	40 gal.	40 gal.	40 gal.	40 gal.	80 gal.	40 gal.
Awning Size	16 ft.	16 ft.	16 ft.	16 ft.	21 ft.	16 ft.	16 ft.



Silverback's luxurious bath includes a large 48" shower with seat and glass doors, porcelain toilet, and a Fantastic Fan.



Many of our competitors use false foam in their fascia. Silverback's

solid wood fascia gives "A" quality difference you can hear and feel!



Removable "Soft Top" vinyl storm doors allow light and visibility without losing cooling or heating.

GVWR (Gross Vehicle Weight Rating) - is the maximum permissible weight of the unit when fully loaded. It includes all weights, inclusive of all fluids, cargo, optional equipment and accessories. For safety and product performance do NOT exceed the GVWR.

GAWR (Gross Axle Weight Rating) - is the maximum permissible weight, including cargo, fluids, optional equipment and accessories that can be safely supported by a combination of all axles.

UVW (Unloaded Vehicle Weight)* - is the typical weight of the unit as manufactured at the factory. It includes all weight at the unit's axle(s) and tongue or pin and LP Gas. The UVW does not include cargo, fresh potable water, additional optional equipment or dealer installed accessories.

CCC (Cargo Carrying Capacity)** - is the amount of weight available for fresh potable water, cargo, additional optional equipment and accessories. CCC is equal to GVWR minus UVW. Available CCC should accommodate fresh potable water (8.3 lbs. per gallon). Before filling the fresh water tank, empty the black and gray tanks to provide for more cargo capacity.

*Estimated Average based on standard build optional equipment.

**Estimated average based on standard build optional equipment.

Each Forest River RV is weighed at the manufacturing facility prior to shipping. A label identifying the unloaded vehicle weight of the actual unit and the cargo carrying capacity is applied to every Forest River RV prior to leaving our facilities.

The load capacity of your unit is designated by weight, not by volume, so you cannot necessarily use all available space when loading your unit.



Silverback's front storage compartment is insulated with 1-1/4" thick baggage doors. The central docking station includes the water bypass, outside

shower, easy access dump valves, slide-room valves and water systems.



LG Solid surface countertop and dual bowl, stainless steel sinks



Another feature that we've taken from residential construction is our super quiet "HP"

(High performance) 15,000 BTU air conditioning system, which includes a larger compressor and cold air returns! This means 30% more air is being forced into the coach than a standard 15,000 air conditioner.



All Silverback fifth wheels are now prewired for an optional Furrion wireless camera. This back-up camera system utilizes wireless

digital technology for a clearer rear view and enhanced safety.



A&E metal wrapped awning with LED night light strip.

FEATURES AND OPTIONS

CEDAR CREEK SILVERBACK EDITION PACKAGE (MANDATORY OPTIONS)

- 48" LED TV in living room (N/A 37BH, 31RK)
- Jensen 12 volt CD/DVD, AM/FM, Bluetooth, MP3/USB stereo system with video streaming capabilities, 4 ceiling mount speakers and two waterproof exterior speakers
- New Maple hardwood cabinet doors
- New ceiling cove molding
- New wallboard
- Upgraded solid wood slide room fascia in living room
- Rebond carpet pad
- Electric fireplace
- Updated Shaw carpet and Congoleum Diamondfloor™ flooring
- Medicine cabinet in bathroom
- La-Z-Boy® sofa and recliners with lifetime warranty on parts
- Dirt Devil central vacuum system
- New recessed stove top with glass cover and LG solid surface handle
- New full panel backsplash
- Upgraded kitchen faucet
- New stainless steel sinks
- New self-closing drawer guides
- 32" LED TV in bedroom
- New bedding and window treatments in bedroom
- New larger mirrored closet doors
- New quad entry step
- Hehr automotive frameless windows
- New friction hinge entry door
- Black A&E metal weather shield for awning
- New pearl front cap with new upgraded graphics package
- LED lighting under awning
- 50 Amp cord reel
- 3 Battery compartment

EXPLORER PACKAGE (MANDATORY OPTIONS)

- Dexter axles/brakes/suspension performance package
 - Dexter E-Z Flex® rubber equalization system with bronze bushings and six greased zerks per side
 - Dexter E-Z Lube™ hubs
 - Dexter Nev-R-Adjust® brakes
- 16" ST tires and aluminum rims
- 8 Cu. ft. gas/electric refrigerator with solid glazed wood door front
- 30" Over the range microwave with outside venting
- LG® Hi-MACS Classic solid surface countertops
- Black tank flush
- Bathroom Breeze Power Fan with wall switch in the bathroom

- Front hydraulic landing legs
- Cedar Creek switch control center
- Winegard HD roof satellite prep
- Prepped for Furion rear wireless camera

STANDARD FEATURES

- "Quite Zone" ducted 15,000 "HP" (High performance), air conditioner with circular motion ductwork and cold air returns. The larger compressor on this AC pushes 30% more air into the coach.
- Attic Vents
- Braced and wired for second air conditioner
- Enclosed and insulated underbelly with 12 volt heating pads on all holding tanks (R38)
- 5/8" Tongue and groove plywood floor
- Braced for optional "Level-Up" 6-point hydraulic level system
- LED tail lights and lower front lights
- Lighted entry step
- Locked docking station with water by-pass, slide room controls, outside shower, satellite and cable hook-ups, 12 volt battery disconnect, city and fresh water fills and easy to use tank handles
- 10 Gallon LP/110 volt/DSI water heater
- Cathedral slide rooms (Main and bedroom slides)
- Create-A-Breeze Fantastic Fan with rain sensor in kitchen
- Digital thermostat for heat and air
- LED ceiling lights with lifetime warranty
- Radius ceiling
- Outside kitchen with sink, faucet, enamel metal waterproof cabinetry, refrigerator, microwave and RVQ gas grill (37BH only)
- 48" Shower with seat and glass doors
- Porcelain toilet with top swirl flush
- Serta® residential mattress
- "True" Pearl Gelcoat Exterior - truly the best of the best in gelcoat exteriors. Stronger, thicker, and keeps its high gloss longer than our competitor's less expensive gel-coated exteriors
- Solid wood fascia - no wrapped foam - try the "Tap Test"

OPTIONAL "LEVEL-UP"™ 6-POINT HYDRAULIC STABILIZATION SYSTEM

RATED #1 CUSTOMER PREFERRED OPTION

Leveling and stabilizing a fifth wheel has never been easier. Patented "Level-Up" technology makes set ups faster, and a lot safer than the older systems. This system stabilizes the coach once the legs have been set. Powerful "Level-Up" even has the strength to level a unit with the tires off of the ground.

OPTIONS

- "Level-Up" 6-point hydraulic level system
- "Quiet Zone" ducted Penguin 13,500 BTU roof mount second air conditioner
- Create-a-Breeze fan with rain sensor and thermostat in the bedroom IPO vent
- Vinyl flooring throughout except bedroom and slides
- Wall hugger La-Z-Boy® theater seating
- Power wall hugger La-Z-Boy® theater seating
- Deluxe La-Z-Boy® ottoman with hidden storage
- Dinette table IPO free standing table and chairs
- La-Z-Boy® trifold Comfort Sleep sofa (37MBH and 37BH Only)
- Jack-knife sofa IPO bottom bunk (37MBH and 37BH Only)
- 12' Super Sofa with hide-a-bed and two sliding tables with mounts (37MBH only)
- Serta® Winding Road King bed
- Serta® Bellagio luxury Queen and King mattress with gel memory foam top
- 11 Cu. ft. stainless steel electric only refrigerator with inverter (N/A 29IK)
- 13 Cu. ft. side-by-side gas/electric refrigerator with raised wood fronts (N/A 29RE, 29IK)
- 19 Cu. ft. stainless steel electric only refrigerator with inverter and icemaker (N/A 29RE, 29IK)
- Washer/dryer prep
- Splendide combination washer/dryer
- Splendide stackable washer/dryer
- Kitchen slide awning topper (1)
- Dual pane windows
- 1-1/4" Bike rack hitch receiver
- Furion rear camera - mounted
- Solar prep
- 200W Solar panel





LUXURIOUS BEDROOM All spacious master bedrooms come standard with 32" LED TVs, roomy cathedral bedroom slide outs and Serta® queen beds with residential bedspreads and matching pillow shams. A king bed is available as an option.

I TRAVEL NOT TO GO ANYWHERE, BUT TO GO. I TRAVEL FOR TRAVEL'S SAKE. THE GREAT AFFAIR IS TO MOVE. – Robert Lewis Stevenson

Cedar Creek
SILVERBACK EDITION

The Smart Choice for the Experienced RV'er

**FOREST RIVER INC./
CEDAR CREEK DIVISION**

501 Hawpatch Road / Topeka, IN 46571

Ph: 260-593-2404 / Fax: 260-593-2447

Parts & Service Ph: 260-593-3017 / Fax: 260-593-2645

All information contained in this brochure is believed to be accurate at the time of publication. However, during the model year, it may be necessary to make revisions and Forest River, Inc., reserves the right to make all such changes without notice, including prices, colors, materials, equipment and specifications as well as the addition of new models and the discontinuance of models shown in this brochure. Therefore, please consult with your Forest River dealer and confirm the existence of any materials, design or specifications that are material to your purchase decision. ©2015 Cedar Creek. A division of Forest River, Inc., a Berkshire Hathaway Company. 11/15 Silverback

On The Web at: www.forestriverinc.com/silverback

FREE MEMBERSHIP
to Forest River Owners' Group

www.forestriverfrog.com



THE SILVERBACK EXPERIENCE

Cedar Creek is dedicated to enhancing the joy of the outdoors and your peace of mind, by building better quality recreational vehicles designed to withstand rugged road conditions and extreme temperatures. Experience Silverback – see where the road leads and enjoy what life has to offer!

YOUR SILVERBACK DEALER

LaMesa RV

LaMesaRV.com
800-496-8778



PRE-DELIVERY INSPECTION FACILITY

20,000 square feet of quality assurance. The bare essentials for a premium product. This state-of-the-art facility gives immediate daily feedback to production for quality assurance in every unit built.

24/7 EMERGENCY ROADSIDE ASSISTANCE

For a worry-free ownership experience

Forest River includes one

year of Coach-Net RV Technical & Roadside

Assistance with each RV purchase. Whether new to the RV lifestyle or an experienced RV enthusiast, Forest River owners have 24/7 access to technical, operational and emergency road service coverage throughout the US & Canada.

Coach-Net's fast, dependable service is just a phone call away.

Coach-Net®

RV Technical & Roadside Assistance



Learn More

Scan this barcode using a QR Reader on your smart phone to learn more about Forest River.



A Berkshire Hathaway company.



Forest River, Inc. encourages our customers to purchase their Forest River products from a local dealership whenever possible for the following reasons:

- 1) Forest River, Inc. dealers are independently owned and operated businesses so priority service and scheduling is at their discretion and is often provided to customers that purchased their unit at that dealership.
- 2) Purchasing locally allows customers to establish meaningful relationships with a dealer, enhancing the RV experience through assistance with product questions, user tips or RV regulations for your state or country, and much more!
- 3) Canadian customers must meet requirements to bring an RV purchased out of the country to their home. These requirements may involve additional inspections and certifications, taxes and fees. Your local Canadian Dealer is a professional at meeting these requirements.
- 4) Scheduling timely warranty repairs and adjustments through a local dealership provides far greater flexibility and convenience to you, the customer!

It is the goal of Forest River, Inc. that all of our RV owners fully enjoy the RV experience and that customer satisfaction meets or exceeds their expectations!